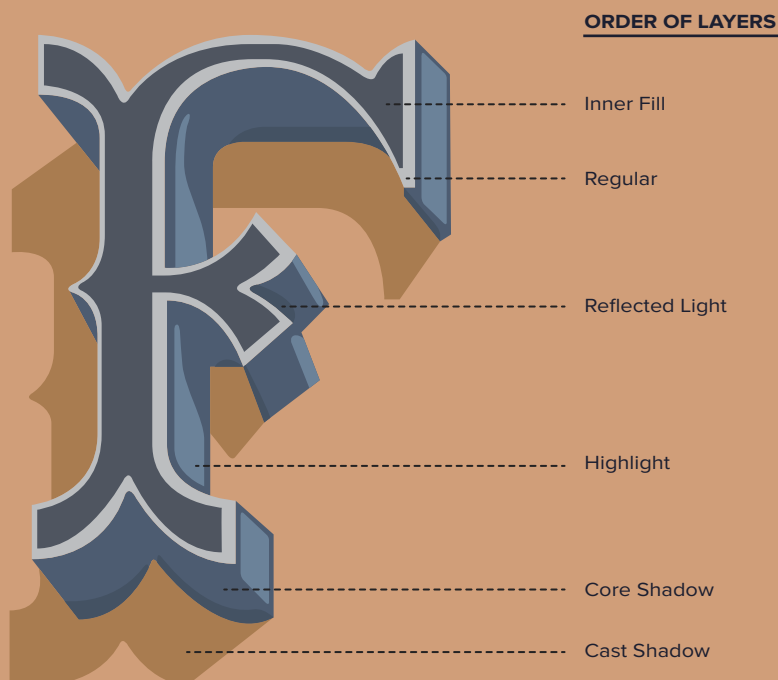


FANTAISIE

SUPER HELPFUL DESIGN TIPS WHEN USING



LEV'S TOP FIVE FANTAISIE TIPS

Number One

Pay careful attention to the *Cast Shadow* as this will dictate your background tone and colour.

Number Two

Create a new feel by only using the *Inner Fill* or *Regular* layers to make 2d type.

Number Three

Use gradients on the *Inner Fill* to give Fantaisie extra depth.

Number Four

Reflected Light is not always necessary and can be switched off.

Number Five

Forget these tips and have fun experimenting with the possibilities.